

## **ENERGY SECTOR**

### **POWER:**

#### **Capacity and Load Shedding:**

- 2000 MW high efficiency generation projects new IPPs and RPPs already added.
- 1200 MW Chashma and IPPs are in the final stages of being inducted into the system.
- GENCOs rehabilitation well underway. Efficiencies will improve and capacity of 500 MW will be regained by December 2011.
- **As a matter of record 30% less load shedding this year (see attached graph).**
- Customer classification survey completed in some DISCOs which has added nearly 10% to revenue in these DISCOs.
- Distribution losses have been reduced from 20.6% to 19% at present. Loss reduction schemes have been fast tracked.
- Hydel generation projects (Tarbela IV, Gomal Zam, Kurram Tangi) being fast tracked both in the Public and Private Sectors to reduce cost of power.
- Low BTU fields like Uch being exploited for cheap power generation. Uch II has already reached financial closure.
- Small dams being expedited through USAID and other resources for fast track development of new agricultural acreage and power generation.
- Chashma-II has started producing 340 MW power and the Chinese have indicated that they will install a number of more units. This will add cheap electricity to the system.

- Load shedding policy has minimized load shedding on industrial feeders to maximize industrial output.

#### **Tariff and Other measures:**

- **Government has released Rs. 150 billion in the last month to reduce circular debt and unclog the system.**
- **Tariff differential reduced from Rs. 256 billion to Rs. 140 billion through efficiency measures introduced by the Power Sector Reforms.**
- **Determined tariff revised by NEPRA to exclude charges for theft or inefficiencies of DISCOs. In future no theft and losses will be passed on to consumers.**

#### **Governance and Efficiencies:**

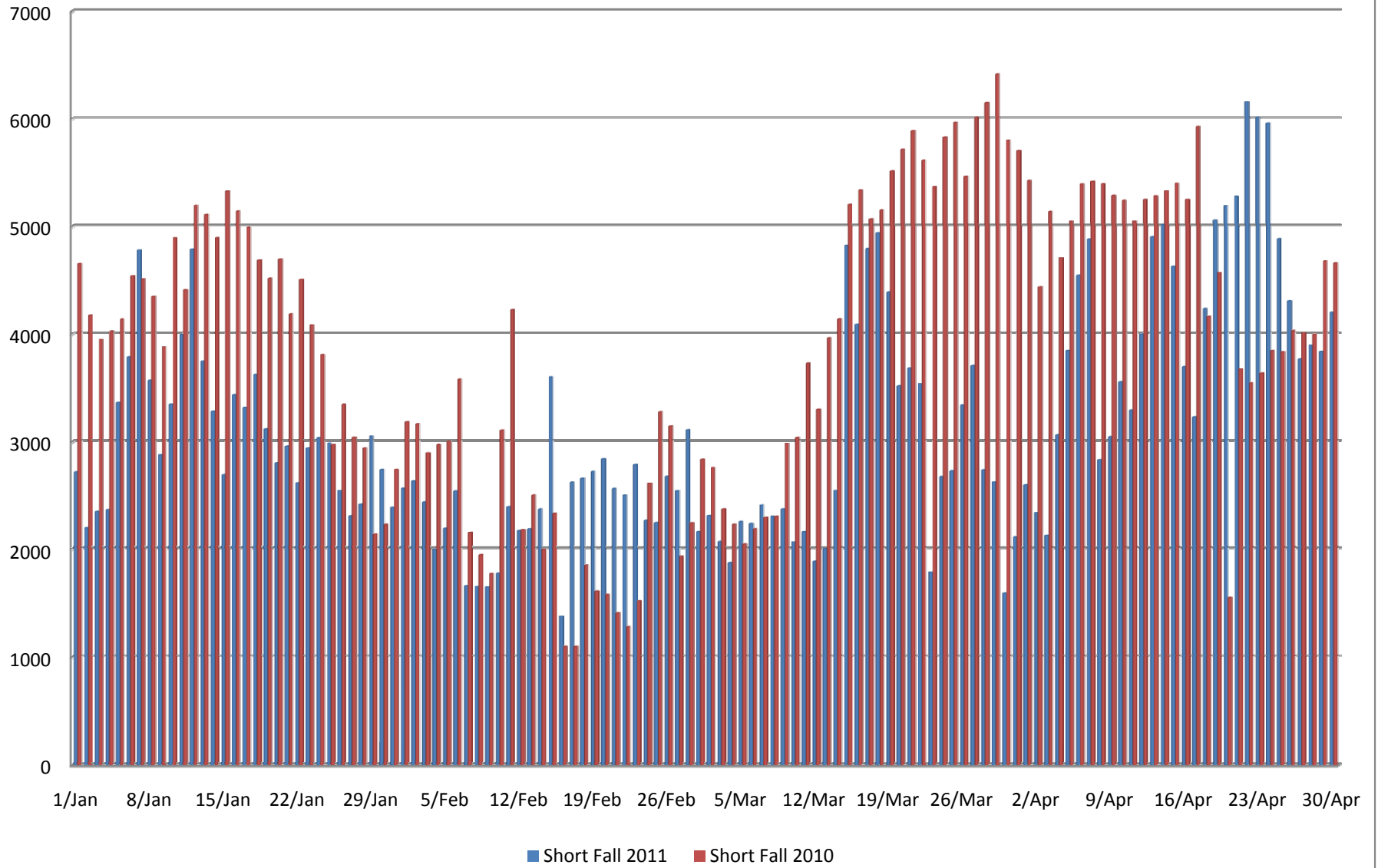
- **Power Sector Companies Boards reconstituted with professional and consumer group representation.**
- Technical and operational Audits of GENCOs and DISCOs completed and being followed up with detailed action plans.
- **Economic Despatch of generation has allowed generation of 30% more electricity with the same amount of fuel.**
- Conversion of steam turbine power generation to coal being expedited.

#### **PETROLEUM:**

- **Petroleum sector CEO's changed and a transparent process to hire the right professionals under implementation.**
- **Highly promising new oil and gas discoveries in KPK will add 30,000 Barrels per day and 300 MMCFD in one year.**

- **Long standing issues in development of gas fields resolved which will add 400 MMCFD to the system within a year.**
- **New producer gas pricing policy will add a potential 50 TCF for development and recovery of tight gas eliminating the gas shortfall within a few years.**
- Balochistan Development package will bring peace and prospect of exploration and discovery of new oil and gas fields.
- Renewed exploration efforts in offshore as India has discovered major oil & gas reserves next to our waters.
- **World Bank is funding an energy efficiency project to reduce UFG in the gas companies and introduce efficient gas appliances for consumers.**
- Work on import of LNG and gas is being expedited to meet demand in the meantime.

# Load Shedding Position 2010 - 2011



**POWER SITUATION**

January/11

Date	2011			2010			Shortfall Difference (MW)
	Generation (MW)	Demand (MW)	Shortfall (MW)	Generation (MW)	Demand (MW)	Shortfall (MW)	
1/Jan	9880	12592	2712	8049	12699	4650	1938
2/Jan	10180	12369	2189	8538	12710	4172	1983
3/Jan	10037	12383	2346	8697	12642	3945	1599
4/Jan	10428	12789	2361	8220	12246	4026	1665
5/Jan	10065	13424	3359	8090	12222	4132	773
6/Jan	9737	13518	3781	8598	13132	4534	753
7/Jan	8776	13553	4777	8760	13269	4509	-268
8/Jan	9801	13366	3565	8824	13166	4342	777
9/Jan	10321	13190	2869	8618	12493	3875	1006
10/Jan	9990	13335	3345	8843	13729	4886	1541
11/Jan	9411	13400	3989	8894	13299	4405	416
12/Jan	8835	13619	4784	8115	13306	5191	407
13/Jan	9792	13537	3745	8076	13178	5102	1357
14/Jan	9411	12690	3279	8515	13403	4888	1609
15/Jan	10096	12784	2688	7887	13207	5320	2632
16/Jan	10240	13671	3431	8062	13201	5139	1708
17/Jan	10165	13476	3311	8152	13141	4989	1678
18/Jan	10094	13714	3620	8341	13021	4680	1060
19/Jan	10855	13966	3111	8607	13122	4515	1404
20/Jan	10955	13749	2794	8498	13186	4688	1894
21/Jan	10427	13381	2954	8893	13075	4182	1228
22/Jan	10748	13360	2612	8613	13117	4504	1892
23/Jan	10463	13402	2939	9095	13176	4081	1142
24/Jan	10453	13484	3031	9088	12888	3800	769
25/Jan	10491	13475	2984	9947	12914	2967	-17
26/Jan	10861	13399	2538	9550	12894	3344	806
27/Jan	11011	13313	2302	9868	12902	3034	732
28/Jan	10867	13280	2413	9973	12912	2939	526
29/Jan	10378	13424	3046	10580	12715	2135	-911
30/Jan	10468	13200	2732	10693	12918	2225	-507
31/Jan	10824	13205	2381	10264	12996	2732	351
1/Feb	10913	13474	2561	10340	13517	3177	616